

EUFORIA
YACHT

[Close window](#)

Serenity



SPECIFICATIONS

Length: 72.00 metres (236' 3")

Beam: 13.80 metres (45' 3")

Draft: 2.10 metres (6' 11")

Number of crew: 30

Built: 2004

Refit: 2016

Builder: Austal

Naval architect: Austal

Flag: Greek

Hull construction: Aluminium

Hull configuration: Displacement

Air conditioning, Deck Jacuzzi, Gym/exercise equipment,
Stabilisers at anchor, Stabilisers underway, WiFi
connection on board

EQUIPMENT

Engines:

Cruising speed: 14

Fuel consumption: Litres/Hr

ACCOMMODATION

Number of cabins: 14

Cabin configuration: 12 Double, 2 Twin

Bed configuration: 12 King, 4 Single

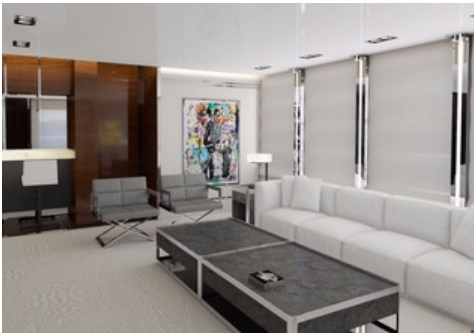
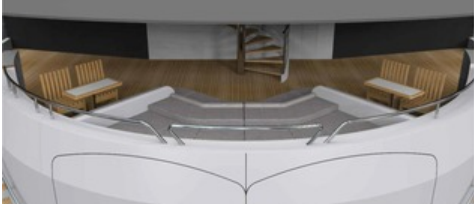
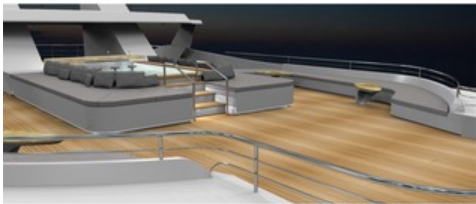
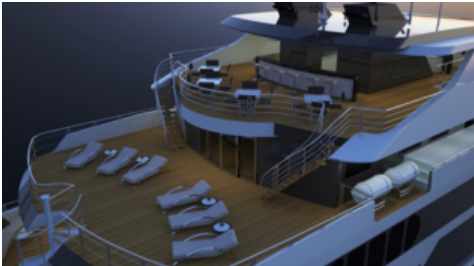
Number of guests: 28

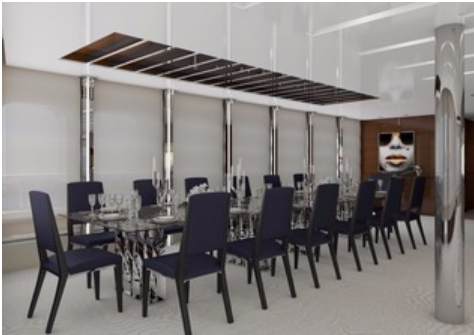
WATER SPORTS

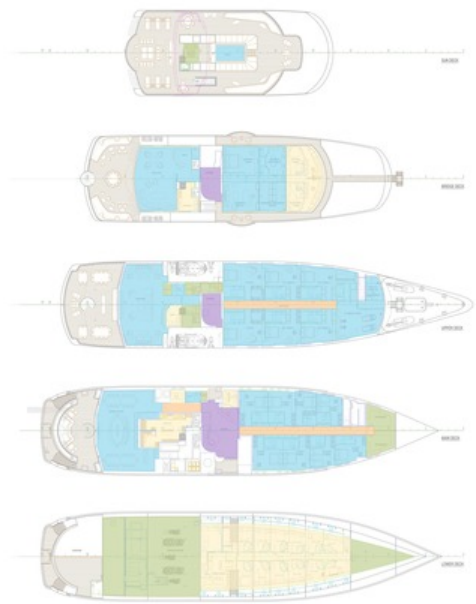
Tenders + toys:

Serenity has been undergoing a major, major refit this winter transforming her into one of the most luxurious yachts available with a capacity of 28 guests.

The instructions given to the designers by the Owner were for a light, spacious and fun yacht!! These are indeed the elements that have been adopted on this wonderful yacht.







This document is not contractual. All specifications are given in good faith and offered for informational purposes only. The publisher and company do not warrant or assume any legal liability or responsibility for the accuracy, completeness, or usefulness of any information and/or images displayed. Yacht inventory, specifications and charter prices are subject to change without prior notice. None of the text and/or images used in this brochure may be reproduced without written consent from the publisher.

- EUFORIA YACHT -