

RIVE Elegance





Ranked amongst the most elite charter yachts, her dynamic, futuristic profile ensures that the RM Elegant is the most unmistakable Mega Yacht in the world. At 72 m and with accommodation for 30 guests she is indubitably a world leader.

This yacht has been created for those who appreciate truly luxurious living and are ready for the sheer joy of life aboard a design masterpiece. Together with her highly trained crew of 31 we can guarantee that you will be provided with an outstanding level of service ensuring the perfect charter.

RM Elegant



THE SUN DECK

It is impossible not to be awestruck by the yacht's vast open deck space. 250 sq m provide an enormous area for both sunbathing and partying. The 12-person spa-pool is serviced from the double sided bar where, alternatively you can sit and enjoy the spectacular panoramic views sipping a glass of champagne.

The Sun Deck is accessed by a lift from all the guest decks and there are two shower rooms on either side of the superstructure.



THE AFT SALOON DECK

The covered outdoor dining area has four round tables convertible into two large oval tables for a total of 30 guests. Should your party be but a handful we do not want you to feel lost therefore the ability to have this flexible seating arrangement allows for intimate dining. The area is serviced by a fully equipped bar and has direct access to the galley from where, our four first class chefs, produce the most delectable menus.







THE MAIN SALOON

Effortlessly elegant the Main Saloon exudes a sense of luxury while simultaneously giving an informal atmosphere. The room is finished in light colours thus emphasizing the triptych painted by the renowned artist Katerina Georgantas that adorns one entire wall. Equipped with a boudoir grand piano, a games table and a 55 inch plasma-screen television it is indeed the ideal place to relax and perhaps indulge in an after-dinner aperitif.





THE DINING ROOM

For more formal dining it is definitely worth experiencing a meal in these superb surroundings while you indulge in an exceptional culinary experience. The style here is modern and clean with an art deco ambience. The innovative kidney shaped dining tables each seat 15 guests and there is a cozy corner where a further 6 guests can enjoy an intimate meal. Cleverly separated from the rest of the room by a curved wall and deep sofas is a fully equipped bar where our crew are ready to serve you the drink of your choice.





THE OWNER'S SALOON

*I*his extremely attractive room has a library atmosphere with leather sofas and a fireplace. Although classic in looks, the entertainment system is right up to date with another large plasma screen television and full cinema surround system. The yacht's extensive DVD and CD library are housed here.
As this room backs on to the Diamond Suite it can be closed off for exclusive use.



DIAMOND SUITE

The Owner's Stateroom, the Diamond Suite, is on the Bridge Deck just aft of the Bridge and occupies the full width of the superstructure thus providing ample space for a seating area, desk and vanity table. It is exquisitely appointed in cooper tones with oak paneled marquetry and sand blasted glass with copper leaf inlay. The adjoining immense bathroom is equipped with both a circular shower and full-sized spa bath with overhead Swarovski crystal fiber optics setting the scene for a very romantic bath time.

RM Elegant





RUBY SUITE

The VIP suite is made up of a main bedroom, a small sitting room and a large bathroom with full-sized spa bath and shower. Like all areas of the yacht everything can be regulated by a Creston remote control. This includes the adjustable lighting with which you can set the mood in your stateroom. Both the Diamond Suite and Ruby Suite have their own lap top computers.





STATEROOMS

The staterooms aboard the RM Elegant are all similar in size but vary in colour schemes. Designed with oak paneled marquetry, lined and mirrored walls, they each incorporate a seating area, have a small desk, a full entertainment systems including an LCD screen and a safe. Each room has direct dial telephone and internet access. All the beds convert from king sized to twin. The most interesting aspect of these staterooms is the curved glass panels decorated with silver leaf that separate the main bedroom from the marble finished ensuite bathroom.





GYM, BEAUTY SALON, MASSAGE ROOM, SAUNA

The fitness centre on the main deck is equipped with professional Cybex equipment televisions and a music system. The sauna is there for your use and our on-board beauty therapist will be happy to give you a relaxing massage. Also available to guests is our professional hairdressing salon.



BUSINESS CENTRE

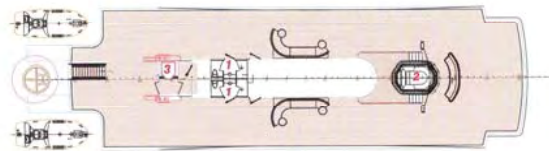
This room has been set up in order to facilitate the business man. The computers, fax machine and printer are all for the guests' use. Video conferencing is also available and an LCD screen can constantly transmit the news or stock markets via satellite TV. Internet is accessible from this centre but also from all areas of the yacht.





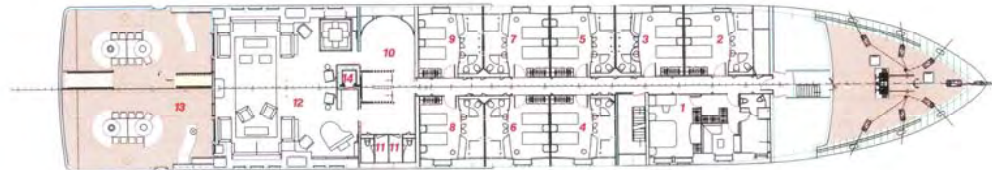
WATER SPORTS

There is direct access to the sea from the extendable aft swimming platform. From here boarding tenders is made easy. The three jet skis and the mass of toys are all at the guests' disposal.



SUN DECK

- 1. SHOWER ROOMS
- 2. JACUZZI
- 3. LIFT



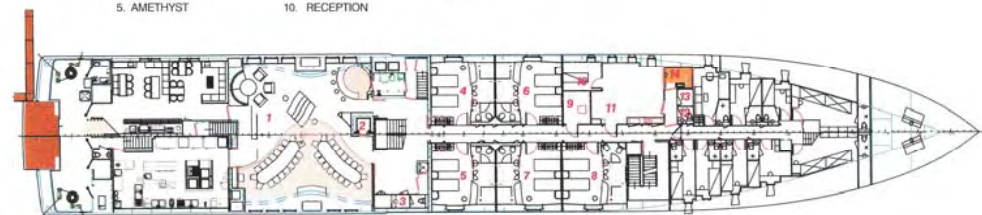
SALOON DECK

- 1. RUBY SUITE
- 2. LAPIS
- 3. TURQUOISE
- 4. TOPAZ
- 5. AMETHYST
- 6. CORAL
- 7. AQUA MARINE
- 8. SAPPHIRE
- 9. EMERALD
- 10. RECEPTION
- 11. GUEST W.C.
- 12. MAIN SALOON
- 13. AFT SALOON DECK
- 14. LIFT



BRIDGE DECK

- 1. DIAMOND SUITE
- 2. OWNER'S SALOON
- 3. BUSINESS CENTER
- 4. LIFT
- 5. WHEEL HOUSE



MAIN DECK

- 1. DINING ROOM
- 2. LIFT
- 3. GUEST W.C.
- 4. CITRINE
- 5. OPAL
- 6. PEARL
- 7. AMBER
- 8. GARNET
- 9. BEAUTY SALOON
- 10. MASSAGE ROOM
- 11. GYM
- 12. GUEST W.C.
- 13. SHOWER ROOM
- 14. SAUNA



TECHNICAL DATA

Launch Year:	2005
Hull Material:	Steel
Builder:	Landa Shipyard
Naval Architect:	N&P&H Helms
Mechanical Engineering:	W.E.M. Lines
Designer:	L. Pini&P
Length (LOA):	72.48 m / 237.53 ft
Beam:	12 m / 39.37 ft
Max Draft:	3.45 m
Min Draft:	3.35 m
Displacement:	1120 metric tons
Commercially Registered Classification:	American Bureau of Shipping #A1 Passenger Vessel (S&M) #ACCLIPORT
Rules & Regulations:	USCG, USCG, IMO, NAVPOL
Health Standards:	US Public Health Service Compliance
Flag:	Croatia
Max Speed:	18 k
Cruising Speed:	17 k
Fuel Consumption at economical cruising speed 14.5 knots Range: 3000 miles Engines:	2 x twin CAT 3516, 2360 bhp each 3 x CAT 3412, 350kw each
Generators:	1 x CAT 3412, 85 kw
Emergency Generator:	Schottel ST1100R, 100kw
Bow Thruster:	Koopman K3800R, 124hp (4 Fuel-in-2)
Stabilizer:	Stabilizer individually regulated in cabins and public areas
Air Conditioning:	USCG Fire Detection System IGW Sprinkler low flow water mist system
Fire Protection:	2 x 25 persons
Life Boats:	2 x 25 persons
Life Rafts:	2 x 25 persons
Communications:	V-Sat Com, 5120MHz; WiFi throughout the yacht external antenna has a range of about 10 miles when there are no obstacles INEX w/F telephone VHF DSC Radio telephones, GMDSS, Inmarsat-C, Scansat CT, MF/HF DSC Radio telephones, VHF GMDSS Emergency Transmitters, Inmarsat telephones, Inmarsat printers, Weather Fax, NAVIS GMDSS Navtex Receiver, Talk track, PA System
Navigation:	Chart Plotter, Echo Sounder, Electronic Charts, ECDIS, Compass Monitor, Gyro Compass, Gyro Compass Repeater, Auto Pilot Sanyang 4000, SpeedLog-SAT LOG, Course recorder, GPS, Alarm Monitoring, Engine Monitoring
Security Safety:	ISPS (International Ship & Port Security) Certificate ISF (International Safety Management) Certificate Closed circuit TV security monitoring system Connected to Telewest (special tele - medical monitoring system)
Medical Facilities:	
Voltage:	220/110 v
Passenger Lift:	On

GENERAL SPECIFICATIONS

Suites:	2
Staterooms:	13
Guests:	30
Crew:	31
Tenders & Toys:	3 x 6 m RIB tenders with Yamaha 100 hp engines 3 x 2 man 120 hp Yamaha WaveRunners 4 x rings, 3 x 2 seater bar stools, Double, Mono, Truck, Children's stork Kneeband, Snorkeling Equipment, 2 Kayaks Clay Pigeon Shooting (on request)
Entertainment:	DVD/CD Library onboard 3 BDK / PS2 videogame library MP3 players capability throughout the yacht Popet Music Throughout the yacht
Main Saloon:	Yamaha Grand Piano, 50" Plasma Screen, Satellite TV, DVD, Dolby Digital Systems, Hi-Fi Stereo, Games Table, Internet Access, Creston Remote Control Panel
Owner's Saloon:	50" Plasma Screen, Satellite TV, DVD, Dolby Surround Sound, Hi-Fi stereo, Internet Access, Creston Remote Control Panel
Business Center (Client's use):	3 Computers, Fax Machine, Printer, Video Conference Facility, Data Link - Internet Access, 22" LCD Screen
Dining Room:	Hi-Fi Stereo, Internet Access
Diamond Suites:	2 x Twin 32" Plasma Screen, Satellite TV reception, DVD, Dolby Digital Systems, Hi-Fi Stereo, Computer, Data Link - Internet Access, Safe, Creston Remote Control Panel
Ruby Suites:	32" Plasma Screen in bedroom, 26" TV in separate sitting room, Satellite TV reception, DVD, Dolby Digital Systems, Hi-Fi Stereo, Computer, Data Link - Internet Access, Safe, Creston Remote Control Panel
Staterooms:	22" LCD Screen, Satellite TV reception, DVD, Dolby Digital Systems, Hi-Fi Stereo, Data Link - Internet Access, Direct Dial Telephone, Safe, Creston Remote Control Panel
Sun Deck:	12 person Jacuzzi, Open Bar, 250 sq.m. approx of sunbathing area
Main Deck:	18 Swimming Platform

