

EUFORIA
YACHT

[Close window](#)

JR



SPECIFICATIONS

EQUIPMENT

Length: 22.00 metres (72' 2")
Beam: 5.30 metres (17' 5")
Draft: 1.73 metres (5' 8")
Number of crew: 2
Built: 2006
Refit: 2014
Builder: Aicon
Naval architect: Aicon
Flag: British
Hull construction: GRP
Hull configuration: Planing hull
Air conditioning

Engines: 2 x CAT 1550 HP
1 x Kohler 19kw 1 x Kohler 13.5kw
Cruising speed: 28
Fuel consumption: 500 Litres/Hr

ACCOMMODATION

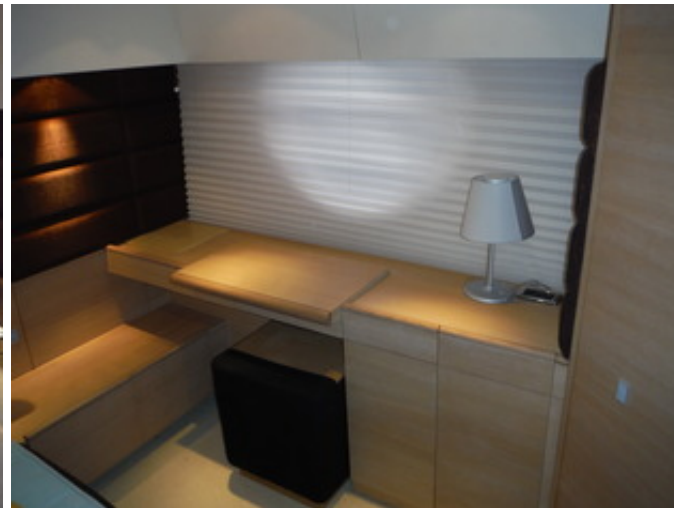
Number of cabins: 3
Cabin configuration: 2 Double, 1 Twin
Bed configuration: 2 Queen, 2 Single
Number of guests: 6

WATER SPORTS

Tenders + toys: Avon 3.20m Jet Tender
Toys TBA









This document is not contractual. All specifications are given in good faith and offered for informational purposes only. The publisher and company do not warrant or assume any legal liability or responsibility for the accuracy, completeness, or usefulness of any information and/or images displayed. Yacht inventory, specifications and charter prices are subject to change without prior notice. None of the text and/or images used in this brochure may be reproduced without written consent from the publisher.

- EUFORIA YACHT -