

EUFORIA YACHT

[Close window](#)

ANCALLIA



SPECIFICATIONS

Length: 45.77 metres (150' 2")
Beam: 8.13 metres (26' 8")
Draft: 2.41 metres (7' 11")
Number of crew: 9
Built: 1984
Refit: 2014
Builder: Feadship
Naval architect: de Voogt
Flag: Greek
Hull construction: Steel
Hull configuration: Displacement
 Air conditioning, Deck Jacuzzi, Stabilisers at anchor,
 Stabilisers underway, WiFi connection on board

ACCOMMODATION

Number of cabins: 7
Cabin configuration: 4 Double, 3 Twin, 1 Convertible
Bed configuration: 1 Pullman, 1 King, 3 Queen, 6
 Single, 1 Convertible
Number of guests: 12

EQUIPMENT

Engines: 2x Caterpillar 3512C, 1,400 hp @1,600 rpm
 (new 2014)
 2x Caterpillar 102.3kw (new 2014)
Cruising speed: 14
Fuel consumption: 350 Litres/Hr

WATER SPORTS

Tenders + toys: 2 x custom made tenders (1 x
 Yachtwerft Meyer 6.5m, 1 x McMullen & Wing 6.1m)
 2 x Yamaha waverunners, Laser Sailboat, water skis,
 wakeboards, kneeboards and tows,
 Snorkeling equipment, children's inflatable paddling pool,
 fishing gear

[Watch the video](#)

Ancallia was entirely rebuilt to an exceptionally high specification from a bare hull (including all machinery, systems and interior) in a three year refit culminating in late 2014.

An acknowledgement of the standards attained in the refit is that she was awarded, against strong competition, the Best Refit 2015 Award at the World Superyacht Awards.

She offers the finish and amenities of a new yacht combined with her elegant, quintessentially Feadship lines.

The highly experienced Owners exceptional attention to detail guarantees guests' comfort and satisfaction on board.

Her Captain and crew have been meticulously selected to offer the highest standards of service.

She offers ample deck areas for lounging, a sun deck with Jacuzzi and direct sea access from her new integrated swim platform.

Her stunning interior, designed by the renowned Colefax & Fowler of London, accommodates 12 guests in 7 cabins.

An outstanding Feadship of 45m she is now available for charter throughout the East and West Mediterranean from her Athens base.

Please click on pictures to see in larger scale



Cruising



Cruising



Profile



Detail



At anchor



At anchor



Aft deck seating



Aft deck seating



Bridge deck aft dining



Main salon



Main salon



Main salon detail



Main salon detail



Dining salon



Bridge deck salon



Master cabin



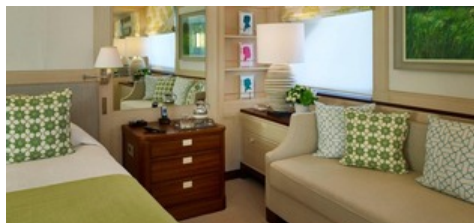
Master cabin office



Master cabin bath/shower room



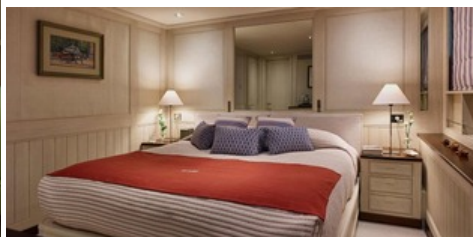
Double cabin



Master cabin detail



Double cabin



Double cabin



Double cabin/bathroom



Twin cabin



Twin cabin



Typical bathroom



Winner Best Rebuilt Yacht 2015



High specification bridge



Cruising



Jacuzzi



Cruising



Cruising



At anchor



At anchor



Detail



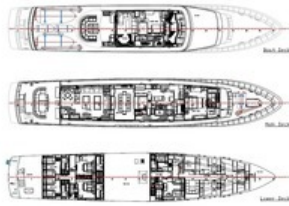
Detail



Profile and sun deck plan



Underwater lighting



GA of accommodation



Two custom made tenders

This document is not contractual. All specifications are given in good faith and offered for informational purposes only. The publisher and company do not warrant or assume any legal liability or responsibility for the accuracy, completeness, or usefulness of any information and/or images displayed. Yacht inventory, specifications and charter prices are subject to change without prior notice. None of the text and/or images used in this brochure may be reproduced without written consent from the publisher.

- EUFORIA YACHT -