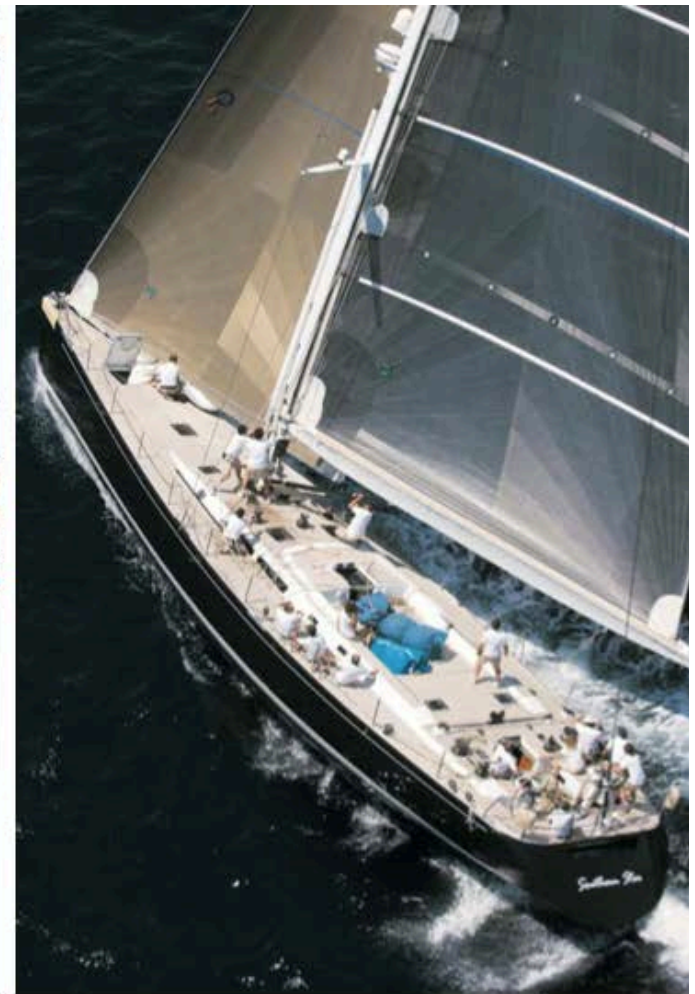


Southern Star

REICHEL-PUGH 78







Barcolana 2005

Southern Star is hull n°5 of the successful RPN 78 mini-series. She was built in 2004. Thanks to the Reichel Pugh naval architecture, Southern Star boasts slippery hull lines, a fin and bulb keel, a high aspect ratio and balanced rudder. The general concept, the interior layout and exterior styling are drawn by the Italian designers Nauta Design, while the UK-based SP Technologies are responsible for the composite structural engineering of hull, decks and structures, which are made in sandwich (Carbon fibres and Kevlar) with epoxy resin.

**Boat International Superyacht Regatta
9th SWS Trophy, 200**



The result is an exceedingly well rounded yacht of excellent performance, whose building philosophy calls for straightforward, simple sailing systems, free from unnecessary technology. Southern Star is a real cruiser-racer, ideal both for blue-water cruises and competitive races [Southern Star was fifth in Barcolana Race in 2005 and won the Boat International Superyacht Regatta in 2008]. The deck layout provides a large guest cockpit protected by a dodger, independent from the sailing cockpit.

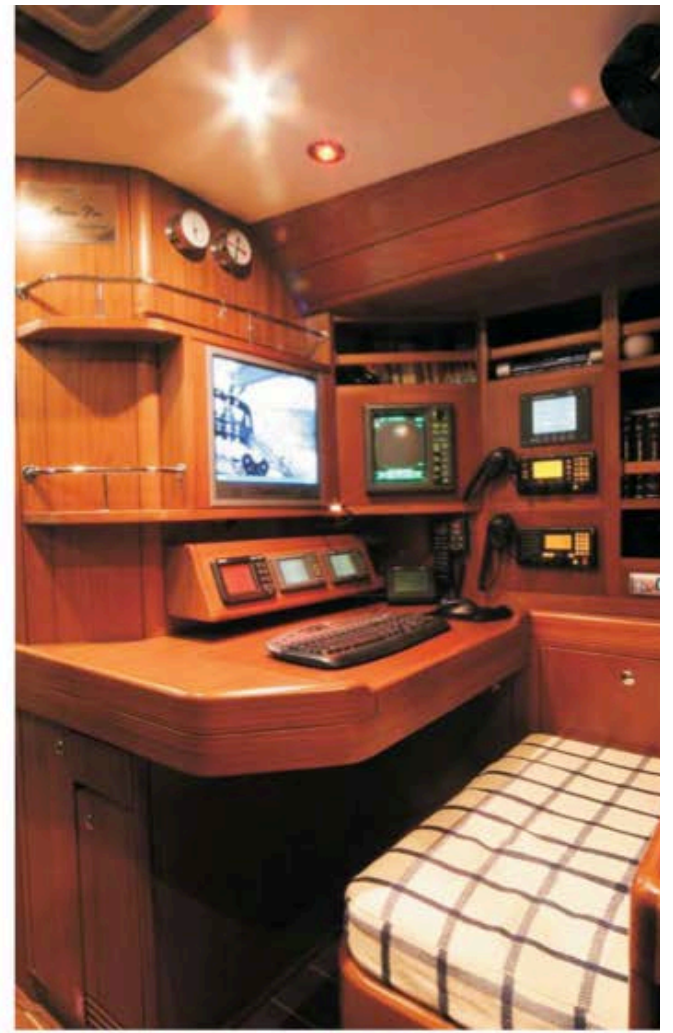
Mast, Park Avenue boom are carbon fibre made by Nordic Mast, and the fraction sail plan of 317 sqm has been designed to optimise manoeuvring and performance also in short handed conditions. The access below deck is either through the aft and the guest cockpit companionways. The stairway of the latter leads to the saloon which

makes use of the full beam of the yacht. This area provides room for a dining table for 8/10 seat plus a lounging area opposite. Forward it there is a large en suite master cabin, while amidships, port and starboard, there are two comfortable en suite guest cabins, one with two separate single berths, while the other with bunkbeds.

The yacht offers plenty of storage room in all its areas.



Galley



Navigation desk



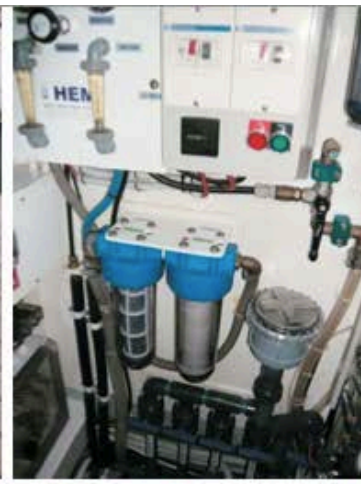
Saloon





Master cabin





Engine room

S O U T H E R N S T A R R P N 7 8



Southern Star

DESIGN DIMENSIONS

L.O.A.	23.99 m.
L.W.L.	20.50 m.
Beam max.	5.91 m.
Draft	3.80 m.
Displacement	34,000 kgs.
Ballast	13,200 kgs.

DESIGNERS

Naval Architect:
Reichel Pugh Yacht Design

General arrangement, deck,
interior and styling:
Nauta Design

STRUCTURAL ENGINEERING

SP Technologies Ltd.

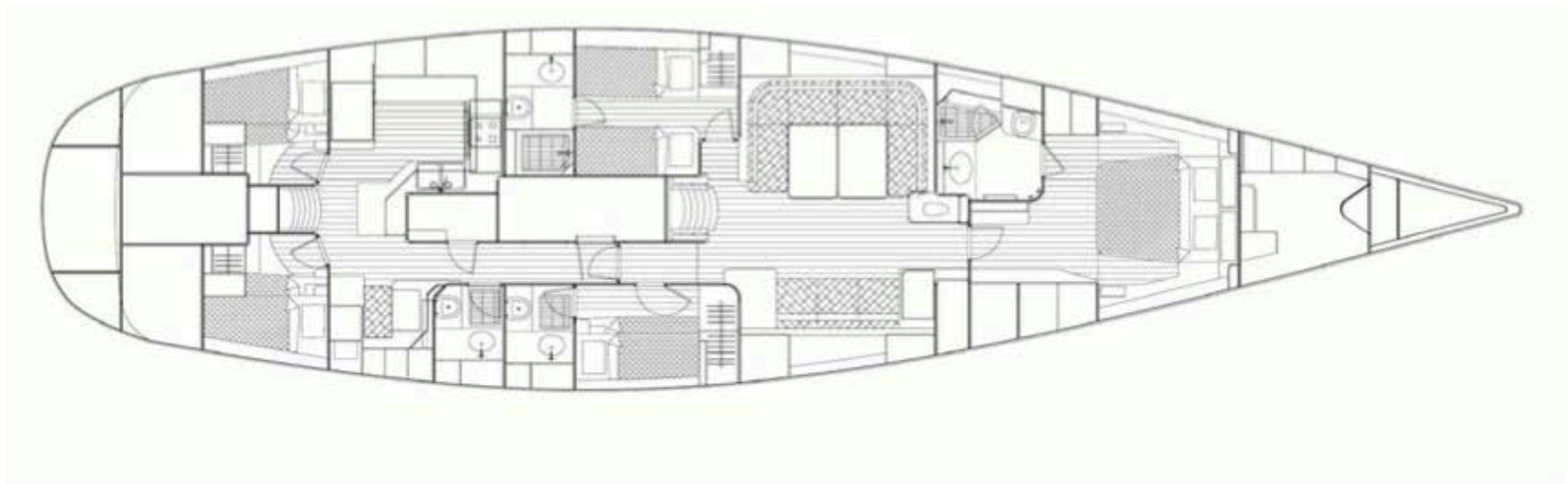
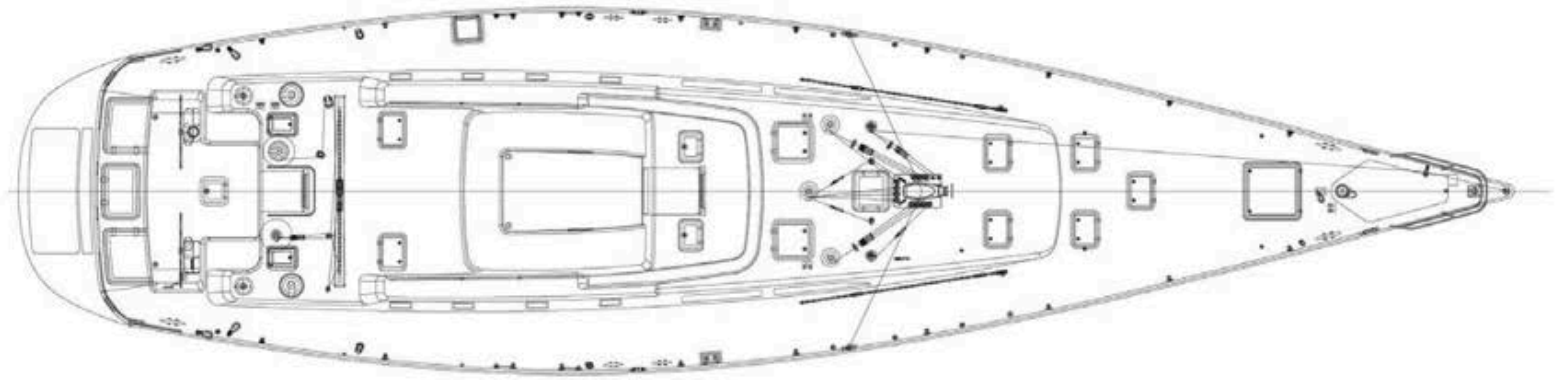
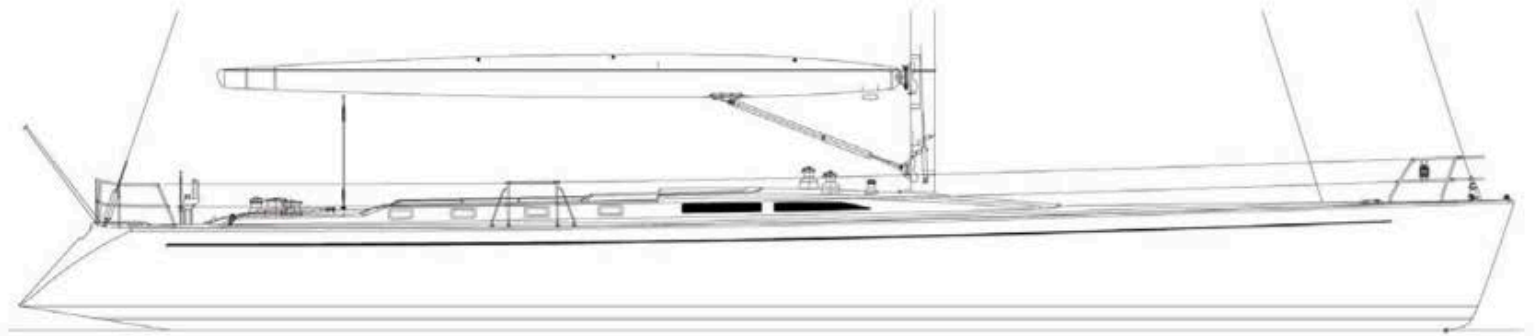
CONSTRUCTION MATERIAL

Sandwich composite carbon fibre,
Kevlar and e-glass

CONSTRUCTION TECHNIQUE

Hull and deck built on male mould,
using wet lay-up

S O U T H E R N S T A R R P N 7 8



GENERAL SPECIFICATIONS

RIGGING

STANDING: rod rigging
RUNNERS: Aramid
INNER FORESTAY: Aramid
FURLER: Reckmann

HYDRAULIC

NAVTEC 4 functions hydraulic pump unit (vang, outhaul, backstay ram, inner forestay)

WINCHES

HARKEN
Primary: 2 x 1110 Hydraulic
Secondary: 2 x 980.3 Hydraulic
Main sail sheet: 980.3 Hydraulic
Traveller: 56.3 Manual
Halyard: 1 x 66.3 Hydraulic
2 x 64.3 Manual

DECK GEAR

ANTAL

ENGINE

Yanmar 4LHA-STP 177Kw @3300 rpm. (3.350 h. Aug. 2010)

PROPELLER

3 blade GORI propeller (800 mm)

BOW THRUSTER

Max Power Retract

WINDLASS

Maxwell 4000

GENERATOR SET

Onan 17,5 Kw (3.045 h. Jan 2010)

WATER MAKER

H.E.M. 180 lt./h. (1.217 h. Jan 2010)

FUEL TANKS

1,600 lt. + 200 lt. day tank

WATER TANKS

1,000 lt.

AIR CONDITIONING

FRIGOMAR 75.000 BTU

VHF

ICOM IC-M601
ICOM Commandic

RADAR

Furuno 1832

SSB

ICOM IC-M208

SATELLITE COMMUNICATION

Inmarsat Stand C - Thrane&Thrane
Sat-phone - Thrane&Thrane
GSM cordless Siemens

COMPUTER

Computer - Fax, Printer, Scanner,
Wireless router

COMPASS

Suunto

GPS

2 GPS Furuno GP-37

B&G

1 Multifunction in Owner cabin
1 Hydra 2000 crew area
2 Multifunction guest cockpit
2 Multifunction crew cockpit
2 40 x 40 mast

PILOT

SIMRAD

DINGHY

Novamarine RH 3,60 mt. +
Yamaha 25 hp outboard

TV & AUDIO

TV Sharp
Stereo B&O (2006)
Decoder Sky
Decoder Satellite Antenna TracVision M3
Surround system Boston
Radio - CD player
Radio - Cd in owner cabin

STOVE

Alpes-Inox
Microwave
Dish Washer Aristarco
Washing Machine - Bosch Maxx

LIFE RAFTS

N. 2 Autoflug x 8 (2008)

SAILS

Main sail - Carbon technora - Quantum (2010)
Genoa - Carbon technora - Quantum (2010)
Main sail - Carbon - Quantum
Genoa - Carbon - Quantum
Genoa 3 - Carbon - Quantum
Spinnaker Asymmetric One Sail (2008)
Staysail- North Sails
Storm staysail - North Sails
Mainsail - Spectra- North Sails
Genoa - Spectra- North Sails
Spinnaker asymmetric+sock - North Sails
Spinnaker symmetric - North Sails

MISCELLANEOUS

Wheel cover Beige
Dinghy cover Beige
Mainsail cover Beige
Guest cockpit spray hood
Crew cockpit spray hood
Deck cushions
Sun bed

CERTIFICATIONS

Cat. A; Recreational Craft Directive 94/25/EC, as amended by Directive 2003/44/EC

BUILDER

Southern Wind Shipyard

YEAR OF CONSTRUCTION

2004

VISIBLE

Italy