

MIREDO



MIREDO Cruising, Bow View



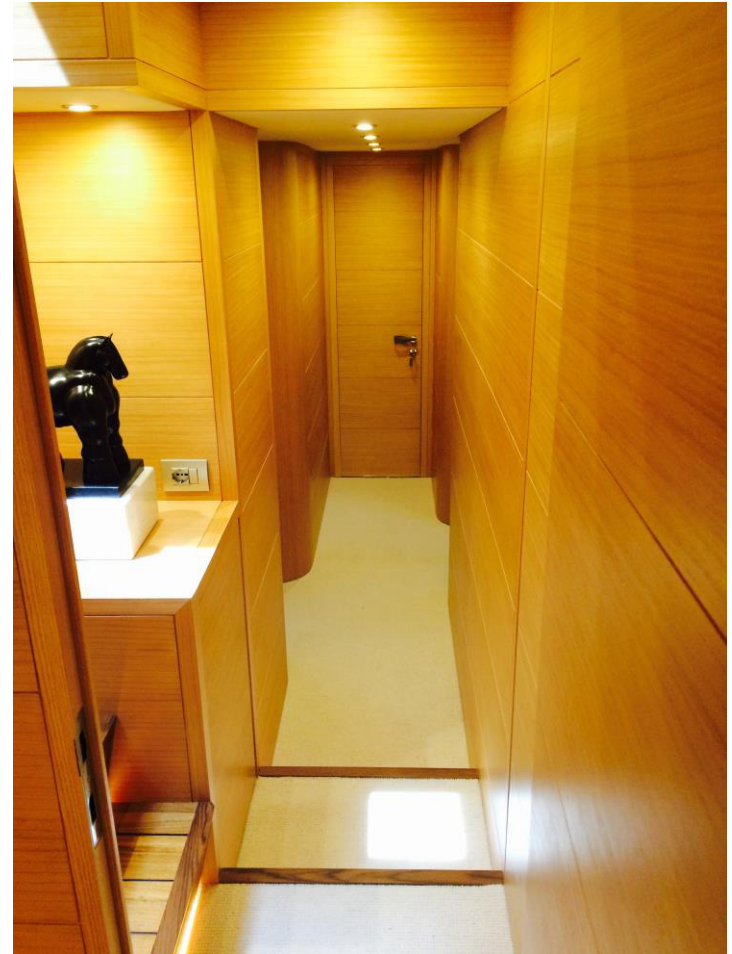
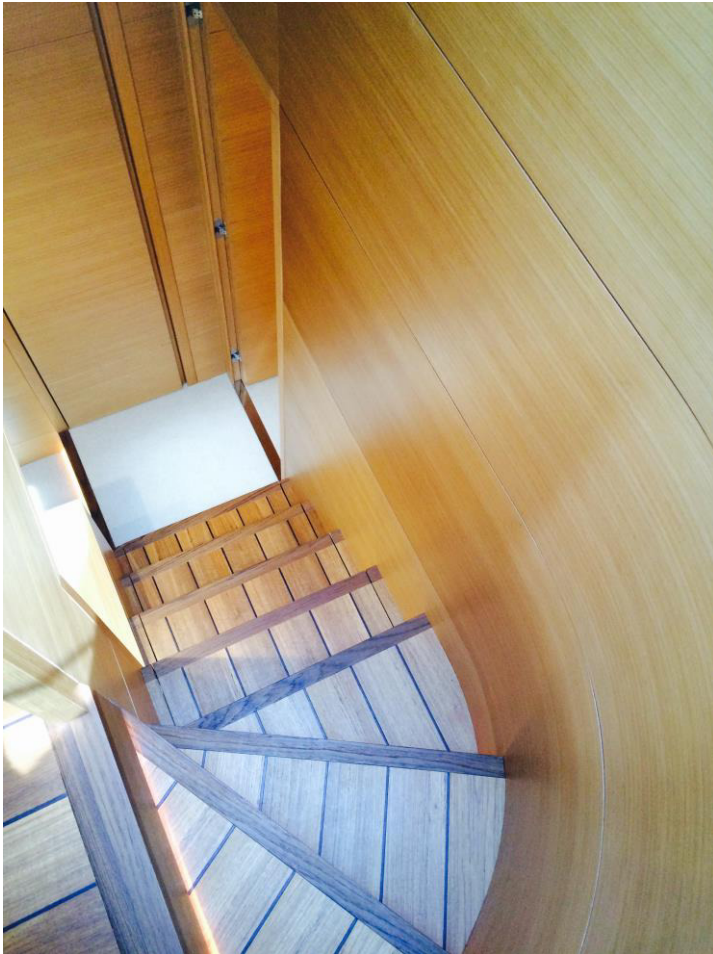
Dehors Dining table



The Salon



Way Below Deck, to the Staterooms



The Master Stateroom



Master Stateroom Head



VIP Stateroom (before Fitting)



The Twin/Convertible Stateroom

Twin Bed to Double Bed, plus Junior Bed



The Twin/Convertible Stateroom

Double bed to Twin bed, plus Junior Bed



Twin Stateroom Head



Fly Bridge with Table and Sun Beds



Fly Bridge with Table and Jacuzzi!



Starboard View of MIREDO



Specifications

□ SPECIFICATIONS

- **Length:** 25.64 metres (84' 1")
- **Beam:** 5.90 metres (19' 4")
- **Draft:** 1.70 metres (5' 7")
- **Model:** Matoria 24
- **Flag:** British
- **Hull:** Planing
- **Built:** 2015
- **Number of crew:** 3

□ ACCOMMODATION

- **Four Staterooms:** 1 Master, 1 VIP, 2 Twin/Convertible (single beds to double bed) plus one Junior bed each
- **Number of guests:** 8 adults and 2 children

□ EQUIPMENT

- **Engines:** 2 x MTU 10V2000 M 94 (1.620 HP each)
- **Cruising speed:** 24
- **Fuel consumption:** 400 Litres/Hr
- Air conditioning
- Deck Jacuzzi
- WiFi on board with 4G Internet connection

□ WATER TOYS

- Tender
- Inflatable toys
- Snorkelling gear
- Ocean Pool (4x4 metres)
- 2 canoes



To book MIREDO, please refer to your trusted Charter Broker.