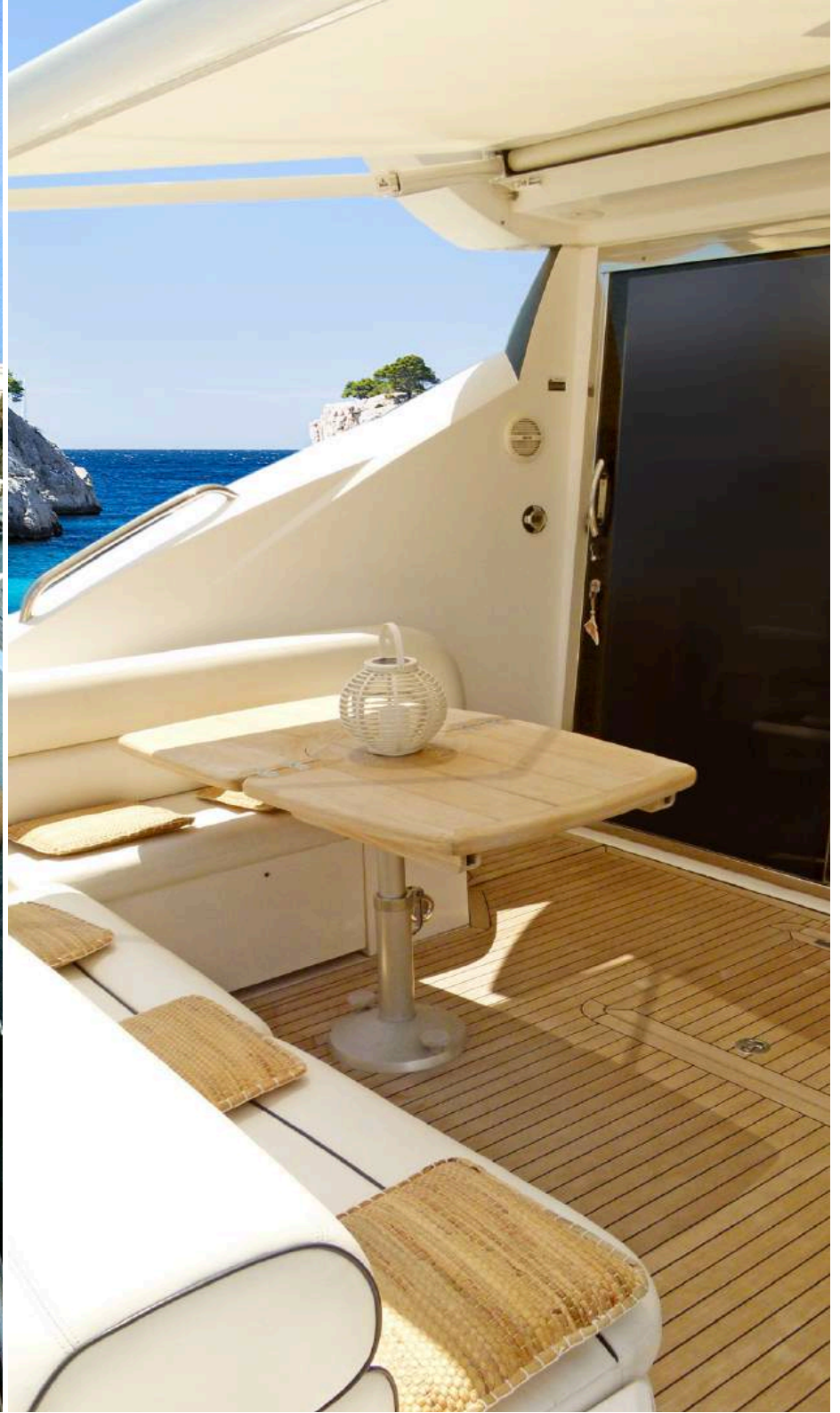




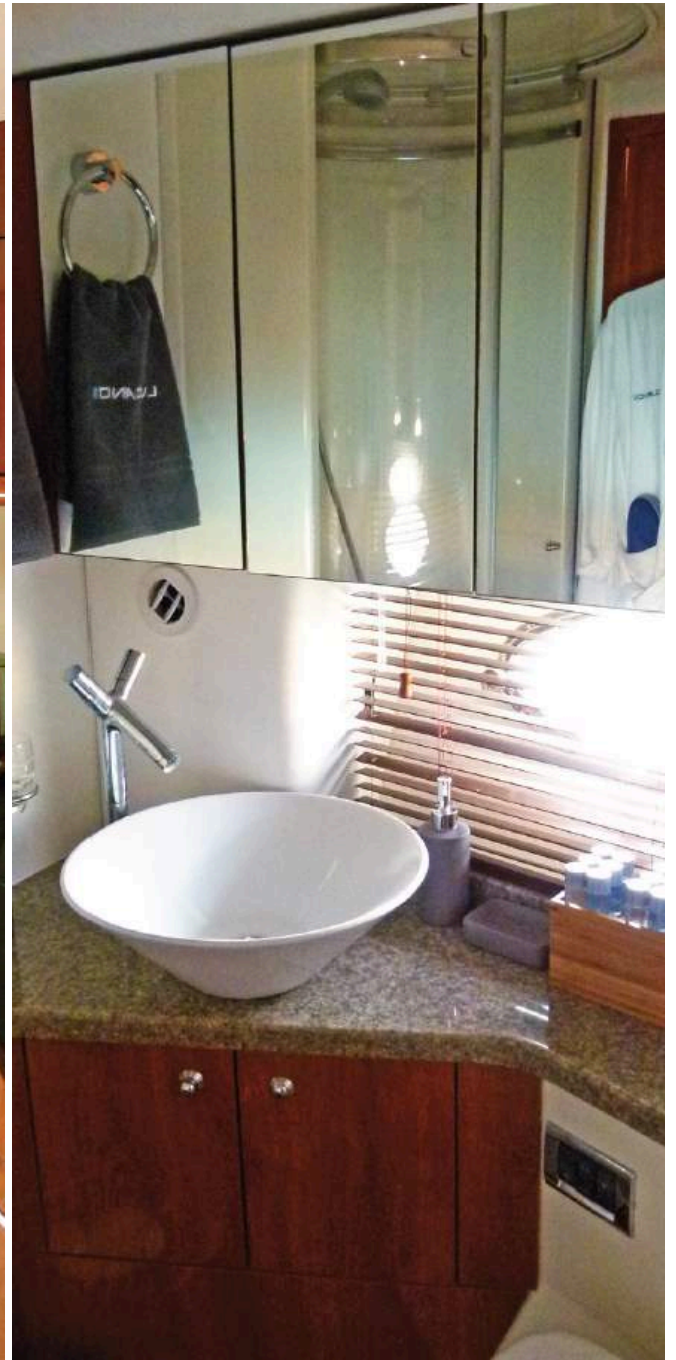
LUCIANO 

SUNSEEKER PREDATOR



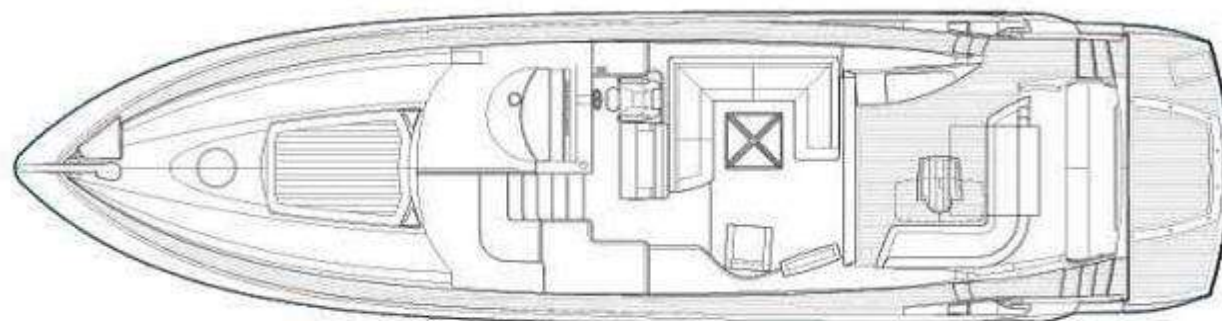
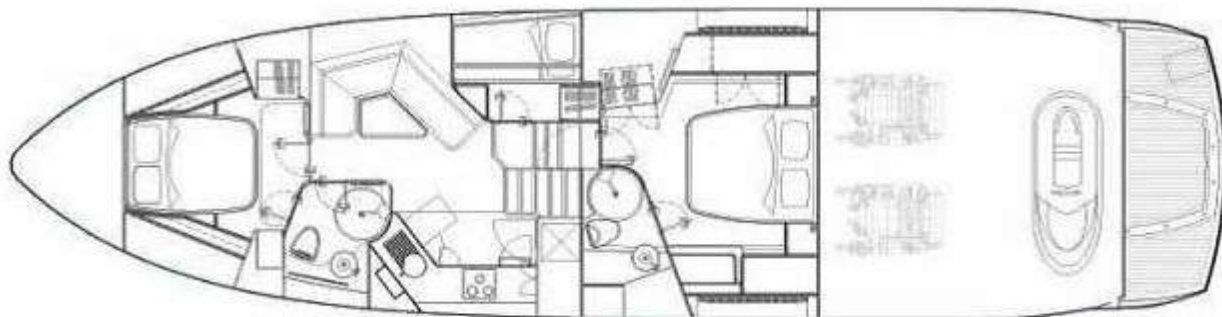












SPECIFICATIONS

Length	20 m
Beam	5,05 m
Draft	1,55 m
Built	2006
Builder	Sunseeker
Engines	2x MAN V8 900HP
Maximum speed	25 Knots
Cruising speed	20 knots
Fuel consumption	approx. 280 L/H

ADDITIONAL FEATURES

Air conditioning
Swim platform

ACCOMMODATION

Sleeping	6
Cruising	12
Cabins	2 double + 1 twin
Bathrooms.....	2
Crew	1 + 1 optional stew
Crew cabins.....	1
Area of navigation	Mediterranean
Registration	French, Toulon
Base	Cannes , France